



2985 Bayview Drive, Shell Beach, California



JF DeBetz or Robert Folsom

805-773-1771

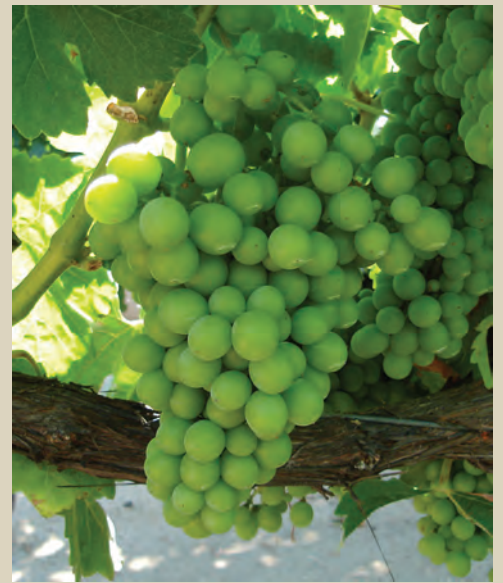
www.MissionCoast.com

www.SpyglassPointe.com

About Spyglass Pointe....



Spyglass Pointe is a new exclusive neighborhood in Pismo Beach, California. Overlooking the Pacific Ocean, Spgylass Pointe is centrally located half way between San Francisco and Los Angeles on the beautiful California Central Coast. The ten exclusive homesites all have stunning ocean views and range from 3400 to 4500 square feet. The amenities in these homes include wine tasting rooms, elevators, home theaters, gourmet kitchens, large decks and much more!.



Spyglass Pointe is located near some of California's best wineries. The Central Coast's mild Mediterranean climate makes this a perfect location grow wine grapes as well as enjoy the outdoors!



You'll become a beachcomber with easy access to some of California's least crowded beaches. The Central Coast is where Californian's vacation. Imagine living at Spyglass Pointe where you can enjoy our beaches year-round!

Coastal Haven

The colors of the brilliant sunsets glistening through the leaves of the Central Coast oak trees were the inspiration for this home's interior. The interior is very holistic with colors and textures brought in from nature:

- Orange hues from the amazing California sunsets
- Greens from the trees and rolling hills
- Sea Foam Blue/Green for the brilliant sky and shimmering ocean
- Carmel colors for the rugged edges of the cliffs near the ocean

The textures within this home are also forms from nature...wood beams fill the ceiling with warm tones creating a feeling of depth and coziness to the great room, stone accents and travertine fill the bathrooms for a clean yet sophisticated look, honed marble floors flow throughout the home's main corridors and an exotic granite sets the state in the large kitchen.

The kitchen boasts Viking brand appliances including a 48 inch Viking range for the most serious of chefs. This stylish kitchen also holds a wine chiller, a trough sink for entertaining and two side-by-side 30 inch refrigerator/freezer units. Even if you are not a cook you won't want to leave this kitchen. The breakfast nook has sunning views of Port San Luis. For the wine connoisseur, there is a small wine room for favorite vintages!

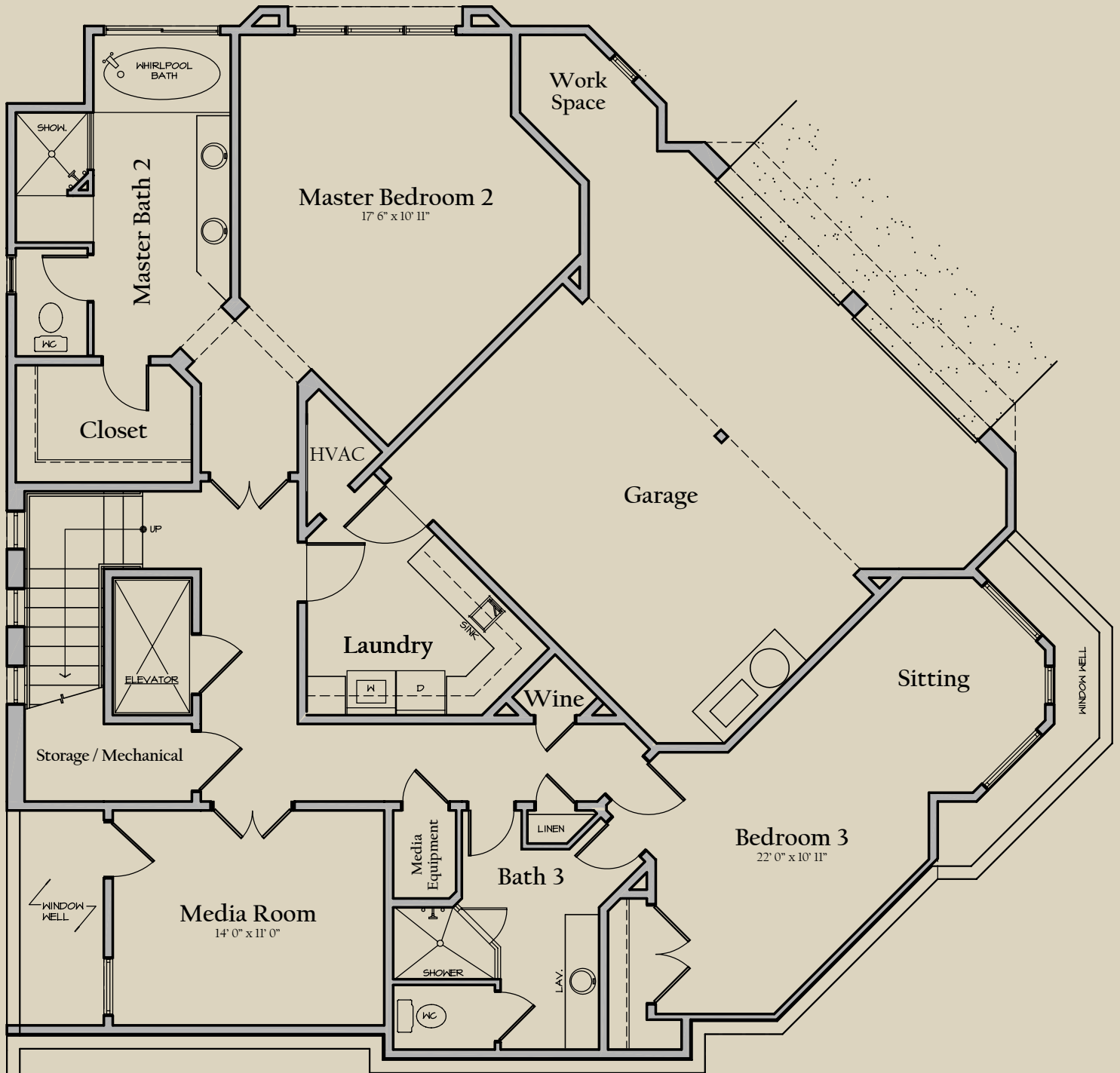
The home has a very well designed floor-plan offering two master bedroom suites, so that guests may feel both pampered and privileged. Both mater baths are serene and very spa-like and feature Jacuzzi tubs with ocean views for complete relaxation!

The great room is large enough to have multiple sitting areas to accompany many guests comfortably while intimate enough for a single couple to cozy up the large stone-faced fireplace. A large covered deck adjacent to the great room has full ocean views and connections for an outdoor BBQ.

There is plenty of room in this home, the oversized third bedroom with sitting area is perfect for a large children's room or another guest room. The grand office retreat is located on the main floor with its own bath.

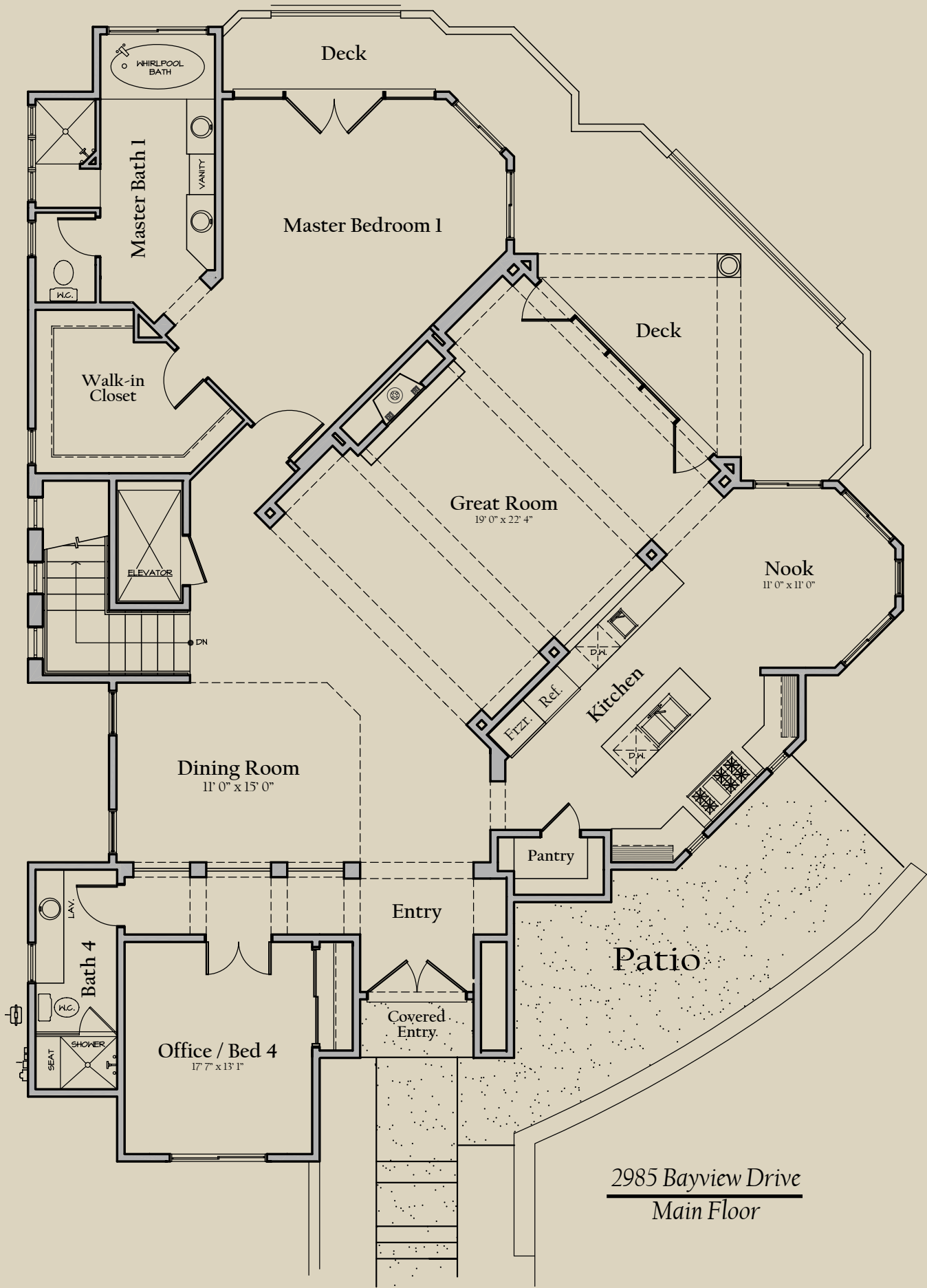
This home is full of conveniences. The large elevator essentially provides single-level living. The central vacuum system speeds cleaning the home so you can enjoy that spectacular sunset! For the tech savvy, there is a home network featuring the ability to add closed circuit TV. For the movie buff, the home theater will astonish you with a true theater experience! Sit back, watch a movie and enjoy your popcorn in a true movie-house setting! All of the televisions in this home can be linked together so you won't miss a moment of the movie or that important sports event.

Lower Level



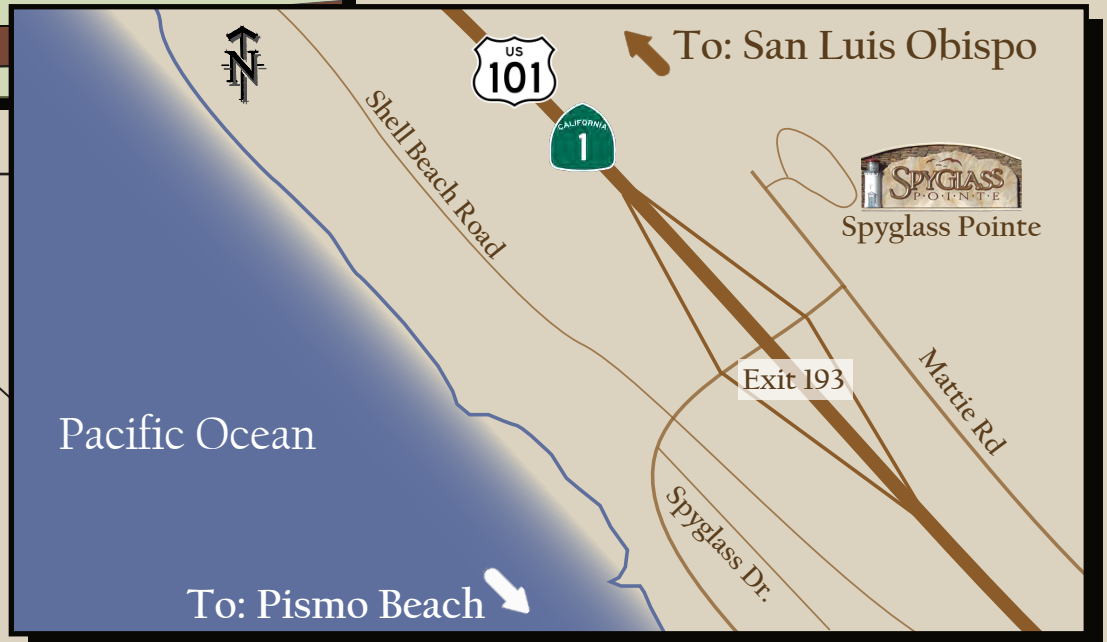
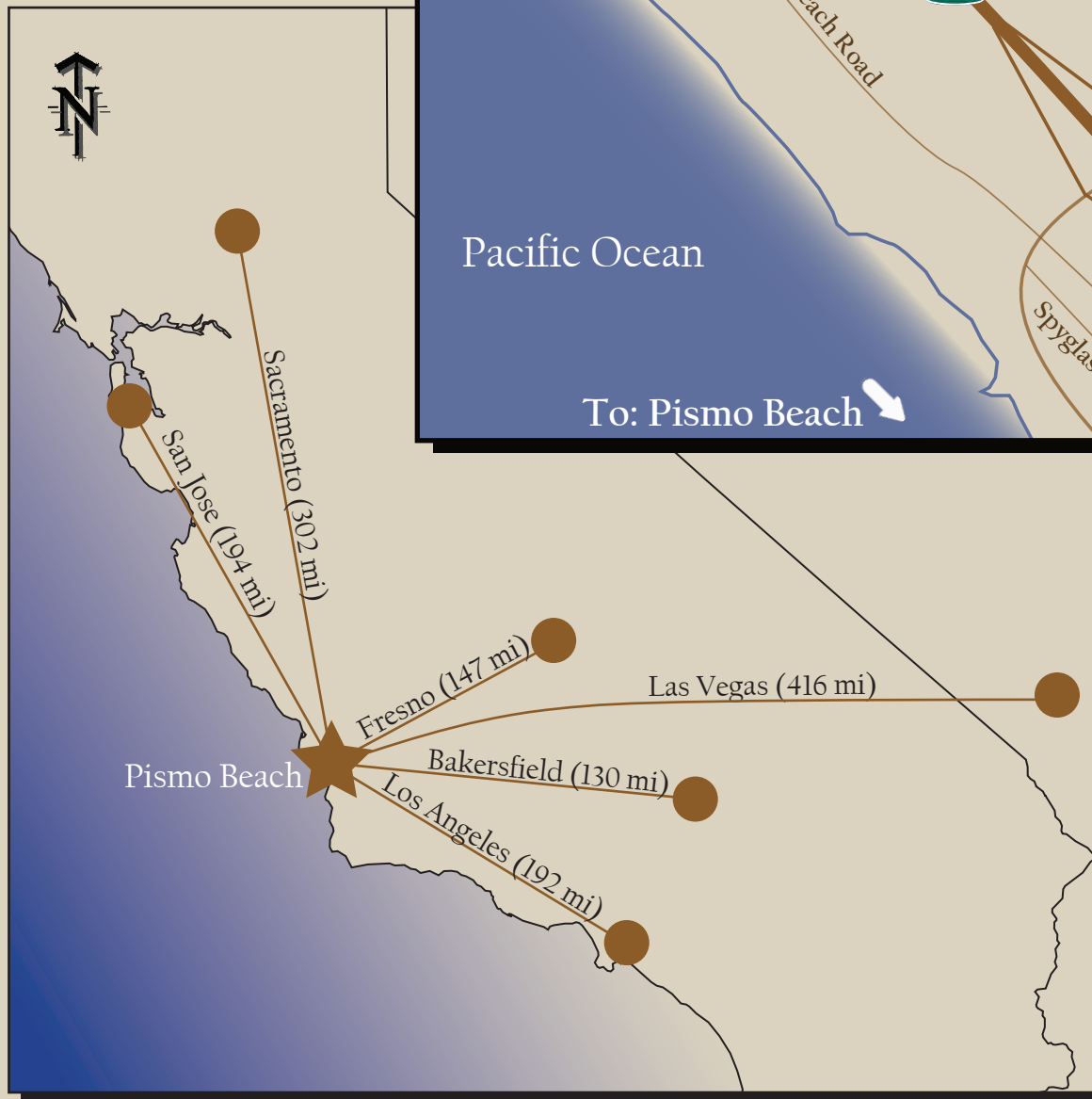
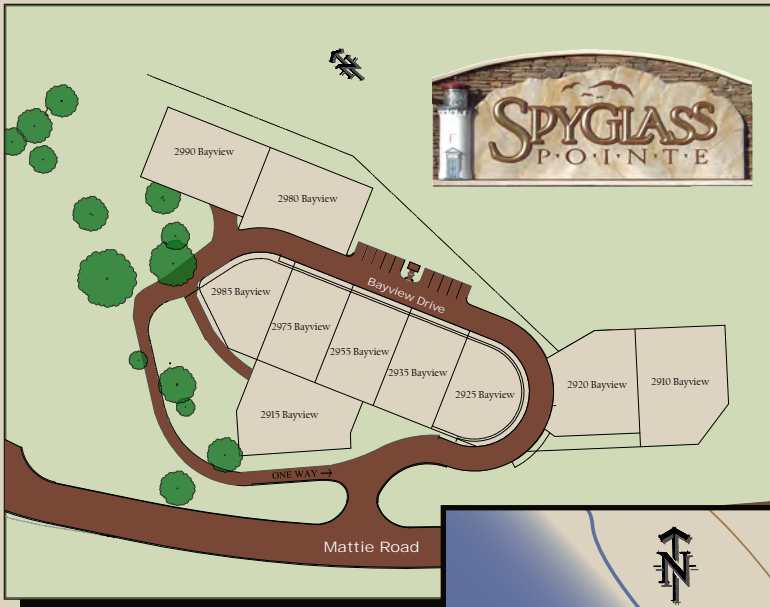
2985 Bayview Drive
Lower Floor

Upper Level



2985 Bayview Drive
Main Floor

Where is Spyglass Pointe...



Quality & Style By Classic California Homes

This is another quality luxury home built by Classic California Homes. Here is just a sample of some of thier other projects.....



150 Beachcomber Drive, Shell Beach
New Construction - Completed: November 2004



2955 Bayveiw Drive, Shell Beach
New Construction - Completion: June 2007



2975 Bayveiw Drive, Shell Beach
New Construction - Completion: October 2007



2985 Bayveiw Drive, Shell Beach
New Construction - Completion: September 2007



2980 Bayveiw Drive, Shell Beach
New Construction - Completion: Winter 2008



10 Bluff Drive, Shell Beach
New Construction - Completion: Fall 2008



334 Indio Drive, Shell Beach
New Construction - Completion: Winter 2008



805-779-7070

805-779-7080 (fax)

www.ClassicCaliforniaHomes.com